

ACQUISITION PROFILE RESIDENTIAL

WE ARE LOOKING FOR...

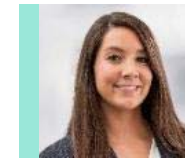
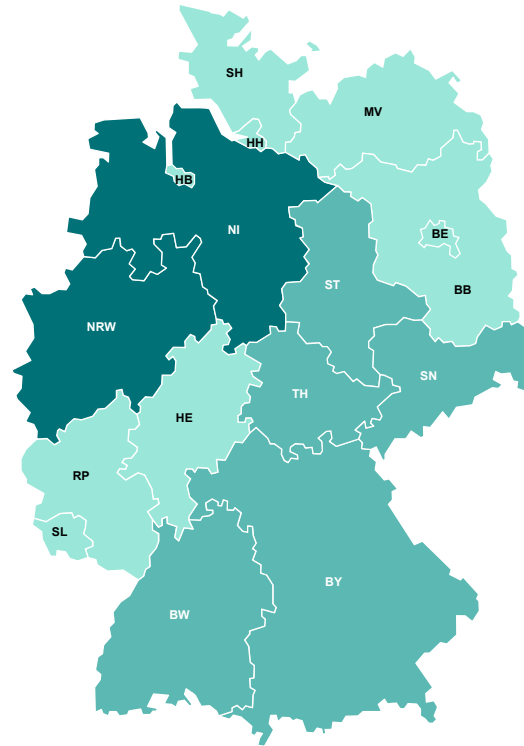


...Residential properties and portfolios
in sustainably rentable locations

INVESTMENT CRITERIA

Risk class	Core, Core Plus
Object type	Residential with max. 30% commercial use, Micro-/ student apartments, serviced living, detached houses
Macro location	A cities incl. suburbs, B cities, german university cities
Micro location	Sustainable rentable location
Construction year	Exciting and new buildings (forward deals)
Single volume	Min. € 10 m, Portfolios of any size

CONTACT



Vanessa Lichter-Pacher
tel. +49 221 39905 315
Vanessa.Lichter-Pacher@swisslife-am.com



Johannes Schmidt
tel. +49 341 97690 102
Johannes.Schmidt@swisslife-am.com



Nikolai Tschischke
tel. +49 221 39905 321
Nikolai.Tschischke@swisslife-am.com

Please send your offer to: investment@swisslife-am.com

Please note that this acquisition profile does not present an offer to conclude an estate agent's contract. Rather, its sole purpose is to provide information about the activities of CORPUS SIREO and the investment targets of its clients. We make express mention of the fact that we pay agent's fees exclusively on the basis of written estate agent's contracts signed by us.